

03-11-2016

Group Count Archive for ScanNet



Created By:
Automation &
Management
Consulting, LLC

Table of Contents

- Overview2
- Prerequisites3
- Installation3
- Setup Parameters.....5
- How to Set Automatic Group Monitoring7
- Operations.....10
 - Purge Data10
- Reporting.....11
 - Maximum Group Counts Report With Times12
 - Maximum Group Counts Report with Totals12
 - Standard Group Count Archive Report13
 - Credential Violator Report13
 - Count of Active Parkers During Each Hour14
 - Active Hours User is in Garage.....14
 - Active Users During Each Hour15
 - Process and Print Inactive Cards.....15
 - Top Parking Counts by Day/Week/Month.....16
 - Top Parking Counts By Period Summary16

Overview

The ScanNet Group Count Archive program monitors DBA/Group Counts set-up in ScanNet. The actual group counts are maintained by ScanNet. See the ScanNet users guide for setup of the group counts.

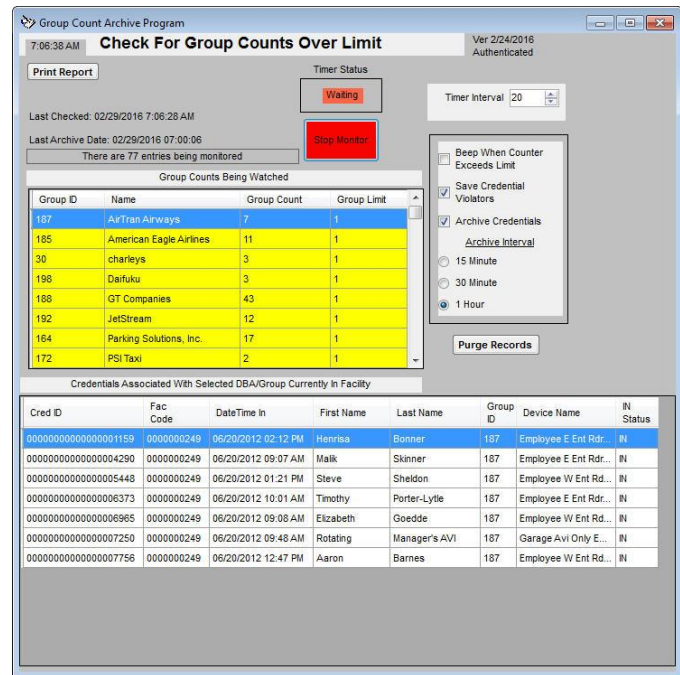
On a selected interval (15 minutes, 30 minutes or 1 hour) the counts are archived to a specified table defined in the ScanNet database. The current count along with the minimum and the maximum count achieved in the archive period are captured. If the option ‘Save Credential Violators’ is checked and the group is in overuse, then the program will archive the list of the credentials associated with the group.

Program can be run on any workstation that has access to the ScanNet database.

In addition to monitoring the group counts, the program can also beep whenever any group is at or over its limit and highlight the entry in the monitoring window.

Installation is simple. Run the SETUP program on the provided CD. On first run of the program, the set-up will automatically take place in the ScanNet database.

Operations are simple as well. After launching the program, the user simply clicks the 'Start Monitor' button. The program will ask if you want to perform an immediate archive. It is up to the operator if they want to perform that archive.



There are archive options on the screen that the operator can adjust. 'Timer Interval' is the number of seconds between checks of the group counts. 'Beep When Counter Exceeds Limit' check box will activate or silence the beep for group overuse. 'Save Credential Violators' check box will save the violators when checked or not document them if unchecked. 'Archive Credentials' check box will archive all the credentials if the box is checked. 'Archive Interval' sets the frequency of archiving the counts.

Another feature is the ability to ‘watch’ which credentials are currently considered ‘IN’ for a select DBA/Group. If a group on the ‘Group Counts Being Watched’ is highlighted in yellow (shown above), it means the group is over its limit. If the operator clicks on a group in the ‘Group Counts Being Watched’ grid, then the grid below, ‘Credentials Associated with DBA/Group Currently in Facility,’ will display the credentials associated with that group. These credentials will be continuously updated each time the ‘Timer Interval’ is reached.

Note that the group that was selected will not be highlighted, but the credentials associated with it will appear in the grid below.

The 'Purge Records' button, located on the right hand side, allows the user to purge old data associated with group counts. More details can be found in the 'Purge Data' subsection of 'Operations' in this document.

The 'Print Report' button in the upper left hand corner will allow the operator to print or export various reports for group counts. More details can be found in the 'reports' section of this document.

Prerequisites

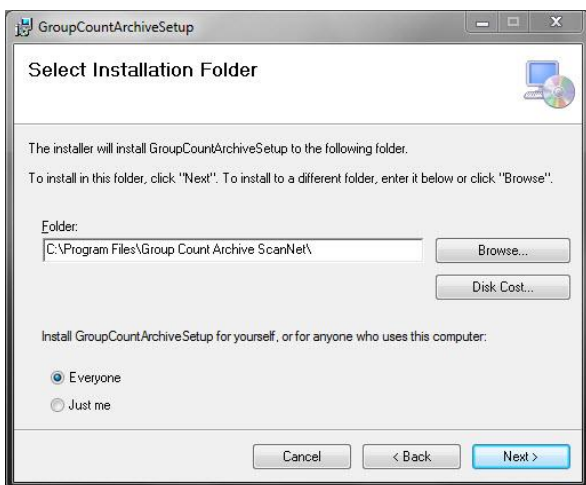
The system requires that ScanNet has been purchased and is installed. All DBA/groups have been defined and credentials associated with the DBA/Group desired.

Installation

Double click the setup.exe file. The following screen will appear:

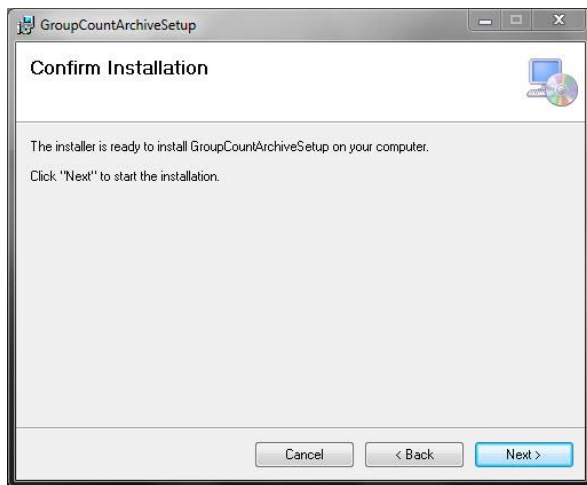


Click 'Next' , the following screen will appear:



The user can determine where the application will install by clicking 'Browse', then selecting a folder. The user can also specify who can use this specific interface by clicking one of the two options, 'everyone' or 'just me'. After the necessary changes are made, click 'next'.

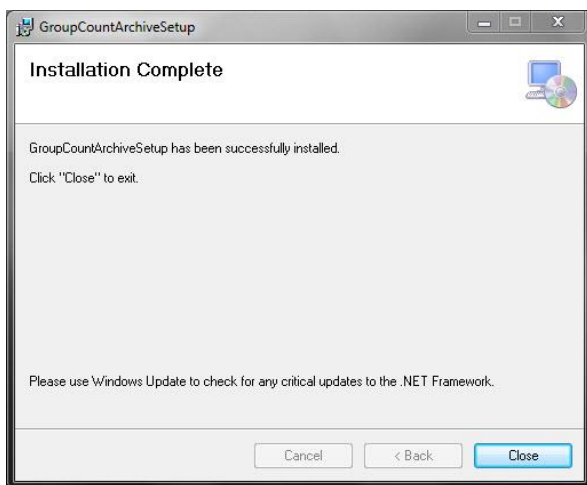
The following screen will appear:



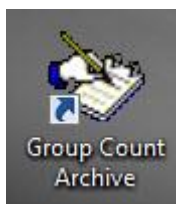
To continue with the installation, click 'next'. (If changes need to be made for the installation destination or who can use the interface, press the 'back' button.)

The application setup will take a few moments to install. Progress of the installation will be shown in the rectangular bar with the message of 'please wait'.

Once completed the next screen will automatically be displayed, as shown below:



Click 'close' to exit the installation program. ScanNet Group Count Archive is now installed.



An icon will appear on the desktop, as shown to the right. Group Count Archive version is now installed on the computer. Double click the icon to load the program.

All setup parameters are contained on the monitoring form. This form (shown below) opens automatically after the user has successfully logged into the ScanNet database.

Group Count Archiving Program

7:06:38 AM

Check For Group Counts Over Limit

Ver 2/24/2016
Authenticated

Print Report

Timer Status
Waiting

Stop Monitor

Timer Interval 20

☐ Beep When Counter Exceeds Limit
☒ Save Credential Violators
☒ Archive Credentials

Archive Interval
☐ 15 Minute
☐ 30 Minute
☒ 1 Hour

Purge Records

Last Checked: 02/29/2016 7:06:28 AM
Last Archive Date: 02/29/2016 07:00:06

There are 77 entries being monitored

Group Counts Being Watched

| Group ID | Name | Group Count | Group Limit |
|----------|-------------------------|-------------|-------------|
| 187 | AirTran Airways | 7 | 1 |
| 185 | American Eagle Airlines | 11 | 1 |
| 30 | charleys | 3 | 1 |
| 198 | Daifuku | 3 | 1 |
| 188 | GT Companies | 43 | 1 |
| 192 | JetStream | 12 | 1 |
| 164 | Parking Solutions, Inc. | 17 | 1 |
| 172 | PSI Taxi | 2 | 1 |

Cred ID

Fac Code

Date/Time In

First Name

Last Name

Group ID

Device Name

IN Status

| | | | | | | | |
|----------------------|------------|---------------------|-----------|---------------|-----|-----------------------|----|
| 00000000000000001159 | 0000000249 | 06/20/2012 02:12 PM | Henrisa | Bonner | 187 | Employee E Ent Rdr... | IN |
| 00000000000000004290 | 0000000249 | 06/20/2012 09:07 AM | Malik | Skinner | 187 | Employee E Ent Rdr... | IN |
| 00000000000000005448 | 0000000249 | 06/20/2012 01:21 PM | Steve | Sheldon | 187 | Employee W Ent Rd... | IN |
| 00000000000000006373 | 0000000249 | 06/20/2012 10:01 AM | Timothy | Porter-Lytle | 187 | Employee E Ent Rdr... | IN |
| 00000000000000006965 | 0000000249 | 06/20/2012 09:08 AM | Elizabeth | Goedde | 187 | Employee W Ent Rd... | IN |
| 00000000000000007250 | 0000000249 | 06/20/2012 09:48 AM | Rotating | Manager's AVI | 187 | Garage AVI Only E... | IN |
| 00000000000000007756 | 0000000249 | 06/20/2012 12:47 PM | Aaron | Barnes | 187 | Employee W Ent Rd... | IN |

Timer Interval: This is the interval for the program to check for changes in the group counts. The value is in seconds with a maximum of 60 seconds. This is in relation to the frequency that activity occurs and the last checked date and times are updated.

Beep When Counter Exceeds Limit: When the box is checked at every timer interval the program will beep for every group that is currently exceeding the group limit.

Save Credential Violators: If the box is checked, at each timer interval, the program will record if the group count has changed and if the count has exceeded the group limit. All the 'IN' credentials associated with the violating group will be written to the appropriate table in the group count archive database.

Archive Credentials: If the box is checked, whenever the group counts are archived the program will also archive all credentials currently 'IN' the facility that are assigned to a group.

Archive Interval: This is the frequency that group counts are stored. This should be matched with the interval defined for archiving the gate and lane counts in ScanNet. Depending on the selection, the archive will take place on the interval. For example, if 1 hour is selected then the archive will occur on the hour, regardless of when the monitor was initially started.

Start/Stop Monitor Button: Used to begin the monitoring program or to stop it from monitoring.

Print Reports: Opens the report form, where the user can select from various reports and group count archive report parameters. See reporting section for more details.

Group Counts Being Watched: Displays a list of all the groups being monitored. Shows group ID, group name, group count & limit.

Credentials Associated with DBA/Group Currently in Facility: When the user single clicks on a group listed under 'group counts being watched', all the credentials associated with that group are displayed in this window. This includes the credential ID, facility code, date and time in, first and last name of the parkers, as well as the group ID, device name, and IN status.

Purge Records: Allows user to remove all stored data prior to a specified date.

How to Set Automatic Group Monitoring

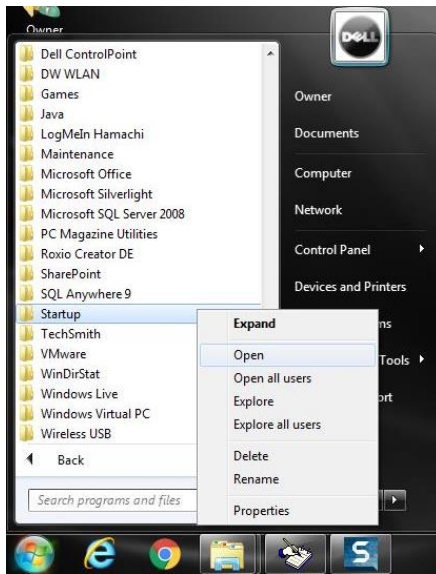
Users have the ability to begin group monitoring automatically and have the counts archived. This is done by adding the Group Count Archive application to the Windows startup menu and by creating a shortcut with a command line prompt which will start monitoring credentials when the application loads.

1. To have the program run at the startup of Windows, perform the following steps.

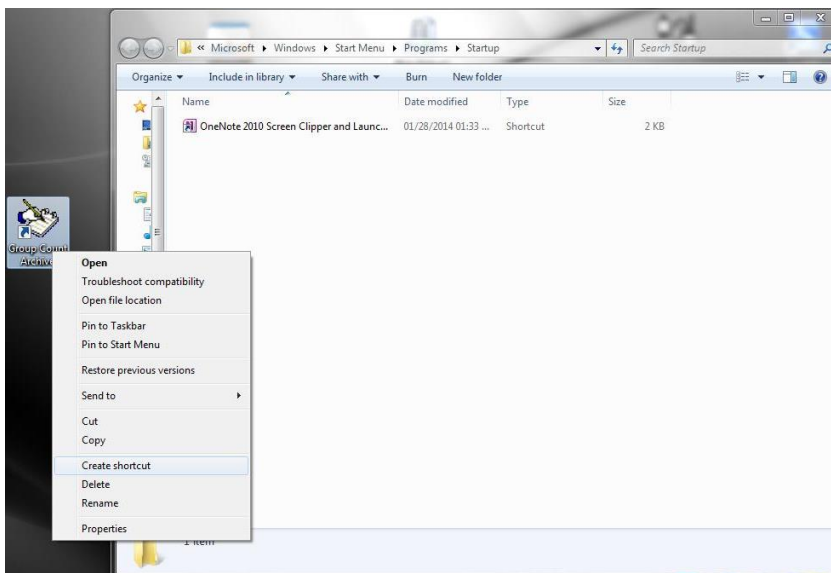
a. Click the 'Start' button (shown right).



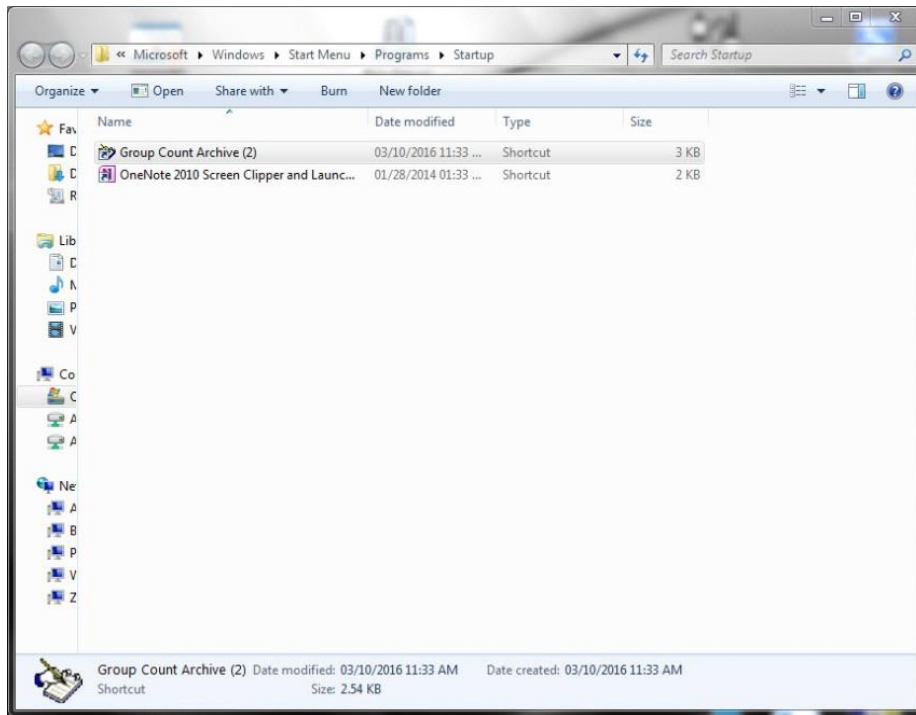
b. Select 'All Programs', find the 'Startup' folder. Right click the folder then select 'Open', as shown below.



c. Go to the location the program was installed. Select the 'GroupCountArchive.exe', right click over it then select 'Create Shortcut'. A shortcut with the file name will be created in the same location as the original file.

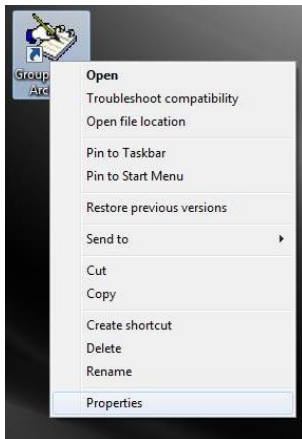


d. Drag the new shortcut, 'Group Count Archive', into the startup folder.

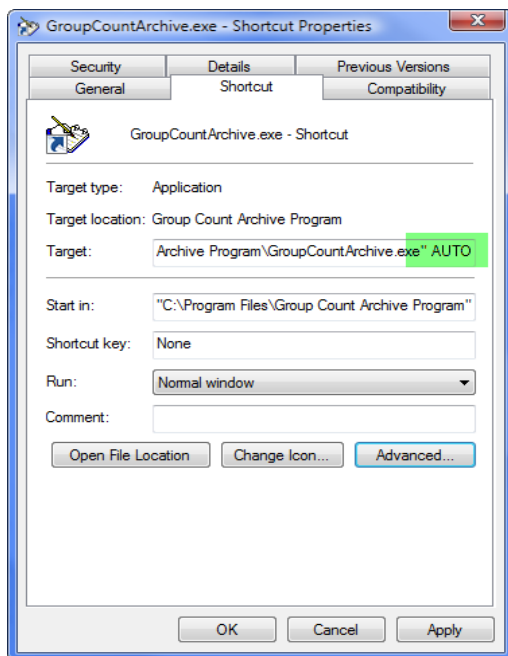


2. To begin monitoring group counts automatically the user must set up a command line prompt, as shown below.

a. Find the program shortcut. Right click the icon and select 'Properties'.



b. Select the 'Shortcut' tab from the tab options. Under the 'Target' section, type a command line of 'AUTO' at the end of the program name, as shown below. Click 'Apply' to save the new settings.



The Group Count Archive program will now automatically begin monitoring group counts when Windows loads.

Operations

When the program is opened manually, the user needs to click the 'start' button, located on the top middle of the archive form. Once the button is clicked, the program will ask the user if they want to archive the counts. If 'yes' is selected, then the group counts will be archived.

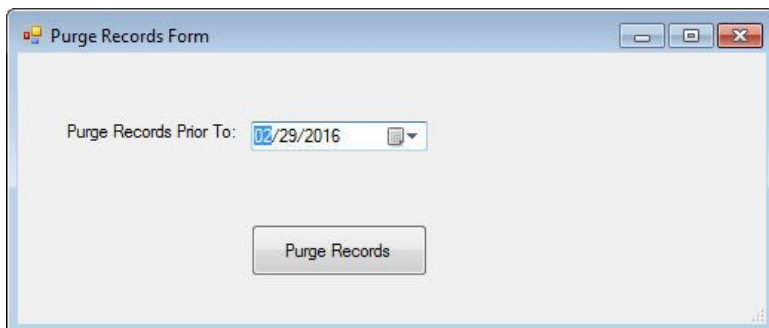


The Group Count Archive program must be running at all times in order to be able to archive the group counts. The application can be minimized. Program can be setup such that it will restart anytime the ScanNet server is restarted.

When the program is active it will look at the time clock. If the specified time interval has been reached the program will archive all group counts. If the 'archive credentials' box has been checked on the form, it will also record all credentials 'IN' the facility for all the groups. It will also simultaneously look at the current counts for each group. If the count exceeds the specified threshold for a group, the program will save all credentials associated with the group that are currently 'IN' the facility, highlight the group in the list so the operator can visually see which counts are over limit, and perform all other normal operations related to Group Counts. If the 'beep with count exceed limit' box is checked, the program will also beep.

Purge Data

This feature allows the user to purge old data associated with group counts. On the archive form, click 'purge data'. A box will pop up, the user must choose a date to purge data from, and then click 'purge data'. All data prior to the selected date will be purged from their respective table.



Reporting

There are seven different reports that can be generated from the captured data. Reports can be generated while the monitor is running. To get to the report menu, click the 'Print Reports' button located in the upper left corner of the monitor form. The report form will pop up, as shown below.

Select Report to Print

Choose Beginning Group: Ainet

Choose Ending Group: Ainet

Beginning Date: 02/29/2016

Ending Date: 02/29/2016

Please Note: You may either select a Single Group Name or fill in the Beginning and Ending Group ID (numeric) for a range of Groups

- ☐ Print 'Maximum' Group Counts Report With Times
- ☐ Print 'Maximum' Group Counts Report With Totals
- ☐ Print 'Standard' Group Count Archive Report
- ☐ Print 'Credential' Violator Report
- ☐ Print Count of Active Parkers During Each Hour
- ☐ Print Active Hours User is in Garage
- ☐ Print Active Users During Each Hour
- ☐ Process and Print Inactive Cards
- ☐ Print Top Parking Counts By Day/Week/Month
- ☐ Print Top Parking Counts By Period Summary

Print Report

Ver 2/18/2016

To generate a report, the user must select a beginning & end date, beginning & end groups, as well as the type of report to view. Once these fields have been filled in, click the 'print report' button on the bottom. A crystal report will be generated. From there, the user can print or export the report. Exporting options include PDF, Excel spreadsheet, or a Word document.

The report beginning and end group can be defined a few different ways. The user can either select a group name from the pull down arrow on the left side of the text box, or the user can manually enter in the group number. It is recommended that for a single group, the pull down menu would be more effective since the end group will initially match the selected beginning group. For selecting all groups or a wide range of groups, the more effective method would be to type in the group id. The choice is ultimately up to the user since either method will produce an accurate report.

Samples of each available report can found below.

Please Note: All of the reports will only report on data archived by the program. If the program is not running, then no data will be found for that period.

Standard Group Count Archive Report

This report displays statistics for each archive interval and daily total for each group on a daily basis. Each row contains the archive time, group count, group limit, minimum count for that hour & the exact time it occurred, as well as, maximum count for the hour and the time max occurred.

| Group Counts Archive Report | | | | | | | |
|-----------------------------|-------------|--------------------|--------------------|------------------|----------------------|------------------|----------------------|
| AirTran Airways | | | | | | | |
| <u>archive date</u> | <u>time</u> | <u>group count</u> | <u>group limit</u> | <u>min value</u> | <u>min date/time</u> | <u>max value</u> | <u>max date/time</u> |
| 01/13/2016 | 09:29 A | 7 | 1 | 7 | 01/13/2016 9:29:00AM | 7 | 01/13/2016 9:29:00AM |
| 01/13/2016 | 09:30 A | 7 | 1 | 7 | 01/13/2016 9:29:00AM | 7 | 01/13/2016 9:29:00AM |
| 01/13/2016 | 09:45 A | 7 | 1 | 7 | 01/13/2016 9:44:00AM | 7 | 01/13/2016 9:44:00AM |
| American | | | | | | | |
| <u>archive date</u> | <u>time</u> | <u>group count</u> | <u>group limit</u> | <u>min value</u> | <u>min date/time</u> | <u>max value</u> | <u>max date/time</u> |
| 01/13/2016 | 09:29 A | 8 | 200 | 8 | 01/13/2016 9:29:00AM | 8 | 01/13/2016 9:29:00AM |
| 01/13/2016 | 09:30 A | 8 | 200 | 8 | 01/13/2016 9:29:00AM | 8 | 01/13/2016 9:29:00AM |
| 01/13/2016 | 09:45 A | 8 | 200 | 8 | 01/13/2016 9:44:00AM | 8 | 01/13/2016 9:44:00AM |
| argenbright | | | | | | | |
| <u>archive date</u> | <u>time</u> | <u>group count</u> | <u>group limit</u> | <u>min value</u> | <u>min date/time</u> | <u>max value</u> | <u>max date/time</u> |
| 01/13/2016 | 09:29 A | 0 | 1 | 0 | 01/13/2016 9:29:00AM | 0 | 01/13/2016 9:29:00AM |
| 01/13/2016 | 09:30 A | 0 | 1 | 0 | 01/13/2016 9:29:00AM | 0 | 01/13/2016 9:29:00AM |
| 01/13/2016 | 09:45 A | 0 | 1 | 0 | 01/13/2016 9:44:00AM | 0 | 01/13/2016 9:44:00AM |
| Bernies Group PHX | | | | | | | |
| <u>archive date</u> | <u>time</u> | <u>group count</u> | <u>group limit</u> | <u>min value</u> | <u>min date/time</u> | <u>max value</u> | <u>max date/time</u> |
| 01/13/2016 | 09:29 A | 0 | 10,000 | 0 | 01/13/2016 9:29:00AM | 0 | 01/13/2016 9:29:00AM |
| 01/13/2016 | 09:30 A | 0 | 10,000 | 0 | 01/13/2016 9:29:00AM | 0 | 01/13/2016 9:29:00AM |
| 01/13/2016 | 09:45 A | 0 | 10,000 | 0 | 01/13/2016 9:44:00AM | 0 | 01/13/2016 9:44:00AM |

Credential Violator Report

The report shows a list of credential violators for the specified group and date range.

| Credential Violator Report | | | | | | | |
|--------------------------------|------|-----------------------|------------|------------------------|------|------------|------------|
| Beginning Date: 01/04/2016 | | | | Beginning Group: 187 | | | |
| Ending Date: 01/13/2016 | | | | Ending Group: 29 | | | |
| <u>dba or groupid:</u> | | 187 | | | | | |
| <hr/> | | | | | | | |
| <u>date time of violation:</u> | | 01/13/2016 09:30:58AM | | | | | |
| Aaron Barnes | 7756 | 06/20/2012 | 12:47:00PM | Rotating Manager's AVI | 7250 | 06/20/2012 | 9:48:00AM |
| Elizabeth Goedde | 6965 | 06/20/2012 | 9:08:00AM | Timothy Porter-Lytle | 6373 | 06/20/2012 | 10:01:00AM |
| Steve Sheldon | 5448 | 06/20/2012 | 1:21:00PM | Malik Skinner | 4290 | 06/20/2012 | 9:07:00AM |
| Henrisa Bonner | 1159 | 06/20/2012 | 2:12:00PM | | | | |
| count of violations for | | 01/13/2016 09:30:58AM | | 7 | | | |
| <hr/> | | | | | | | |
| <u>date time of violation:</u> | | 01/13/2016 09:32:07AM | | | | | |
| Aaron Barnes | 7756 | 06/20/2012 | 12:47:00PM | Rotating Manager's AVI | 7250 | 06/20/2012 | 9:48:00AM |
| Elizabeth Goedde | 6965 | 06/20/2012 | 9:08:00AM | Timothy Porter-Lytle | 6373 | 06/20/2012 | 10:01:00AM |
| Steve Sheldon | 5448 | 06/20/2012 | 1:21:00PM | Henrisa Bonner | 1159 | 06/20/2012 | 2:12:00PM |
| Malik Skinner | 4290 | 06/20/2012 | 9:07:00AM | | | | |
| count of violations for | | 01/13/2016 09:32:07AM | | 7 | | | |

Count of Active Parkers During Each Hour

For each predetermined archive interval, this report displays the maximum count for each group per interval. Each row displays the time interval, group count, and maximum count.

Note: The time interval is selected in the archive interval setup

| Active Parkers During Each Hour | | | |
|---------------------------------|-------------|-----------------------|------------------|
| Beginning Date: 02/29/2016 | | Beginning Group: | 187 |
| Ending Date: 03/03/2016 | | Ending Group: | 46 |
| AirTran Airways | | | |
| <u>Date</u> | <u>Hour</u> | <u>Active Parkers</u> | <u>Max Value</u> |
| 02/29/2016 | 01:00 AM | 7 | 7 |
| 02/29/2016 | 01:15 AM | 7 | 7 |
| 02/29/2016 | 01:30 AM | 7 | 7 |
| 02/29/2016 | 01:45 AM | 7 | 7 |
| 02/29/2016 | 02:00 AM | 7 | 7 |
| 02/29/2016 | 02:15 AM | 7 | 7 |
| 02/29/2016 | 02:30 AM | 7 | 7 |
| 02/29/2016 | 02:45 AM | 7 | 7 |
| 02/29/2016 | 03:00 AM | 7 | 7 |
| 02/29/2016 | 03:15 AM | 7 | 7 |
| 02/29/2016 | 03:30 AM | 7 | 7 |
| 02/29/2016 | 03:45 AM | 7 | 7 |

Active Hours User is in Garage

For each hour per day, this report displays each credential's time in the garage. This report is useful for documenting overuse for the organization responsible for a specific group.

| Active Hours User Is In Garage | | | | | | | | | | | | | | | | | | | | | | | | | | |
|--------------------------------|---------------------------|------------|------|------|------|------|------|------|------|------|------|-------|-------|-------|------|------|------|------|------|------|------|------|------|-------|-------|-------|
| card# | parker name | date | 1 am | 2 am | 3 am | 4 am | 5 am | 6 am | 7 am | 8 am | 9 am | 10 am | 11 am | 12 pm | 1 pm | 2 pm | 3 pm | 4 pm | 5 pm | 6 pm | 7 pm | 8 pm | 9 pm | 10 pm | 11 pm | 12 am |
| 1159 | Henissa Bonner | 01/13/2016 | | | | | | | | | x | x | | | | | | | | | | | | | | |
| 4290 | Malik Skinner | 01/13/2016 | | | | | | | | | x | x | | | | | | | | | | | | | | |
| 5448 | Steve Sheldan | 01/13/2016 | | | | | | | | | x | x | | | | | | | | | | | | | | |
| 6373 | Timothy Porter-Lytle | 01/13/2016 | | | | | | | | | x | x | | | | | | | | | | | | | | |
| 6965 | Elizabeth Goedde | 01/13/2016 | | | | | | | | | x | x | | | | | | | | | | | | | | |
| 7250 | Rotating Manager's AVI | 01/13/2016 | | | | | | | | | x | x | | | | | | | | | | | | | | |
| 7756 | Aaron Barnes | 01/13/2016 | | | | | | | | | x | x | | | | | | | | | | | | | | |

Active Users During Each Hour

This report displays list of credentials that were in the facility for a given archive time.

| Active Users During Each Hour | | | |
|-------------------------------|-------------|------------------------|--------------------|
| Start Date: 12/01/2015 | | Beginning Group: 187 | |
| End Date: 03/03/2016 | | Ending Group: 187 | |
| <u>Date</u> | <u>Hour</u> | <u>Name</u> | <u>Card Number</u> |
| 12/29/2015 | 01:00P | Henrisa Bonner | 1159 |
| 12/29/2015 | 01:00P | Rotating Manager's AVI | 7250 |
| 12/29/2015 | 01:00P | Timothy Porter-Lytle | 6373 |
| 12/29/2015 | 01:00P | Elizabeth Goedde | 6965 |
| 12/29/2015 | 01:00P | Malik Skinner | 4290 |
| 12/29/2015 | 01:00P | Steve Sheldon | 5448 |
| 12/29/2015 | 01:00P | Aaron Barnes | 7756 |
| 12/31/2015 | 12:42P | Rotating Manager's AVI | 7250 |
| 12/31/2015 | 12:42P | Malik Skinner | 4290 |
| 12/31/2015 | 12:42P | Aaron Barnes | 7756 |
| 12/31/2015 | 12:42P | Steve Sheldon | 5448 |
| 12/31/2015 | 12:42P | Elizabeth Goedde | 6965 |
| 12/31/2015 | 12:42P | Timothy Porter-Lytle | 6373 |
| 12/31/2015 | 12:42P | Henrisa Bonner | 1159 |
| 12/31/2015 | 02:06P | Aaron Barnes | 7756 |

Process and Print Inactive Cards

This report displays inactive cards. The report is organized by card number and grabs all inactive cards, the group and date range do not factor into the report data.

| Inactive Cards Report | | | | |
|------------------------|---------------|-------------------------|--------------------|--------------------------|
| Begin Date: 01/07/2016 | | Ending Date: 01/13/2016 | | Total Count 4,121 |
| <u>Parker Name</u> | <u>Card #</u> | <u>Validity</u> | <u>Last Access</u> | <u>Group Name</u> |
| No Patron Name | 3 | ISSU | | Uber Taxi Service |
| No Patron Name | 14 | ISSU | | Uber Taxi Service |
| No Patron Name | 21 | ISSU | | CPS/CRAA |
| No Patron Name | 22 | ISSU | | Uber Taxi Service |
| No Patron Name | 23 | ISSU | | Uber Taxi Service |
| No Patron Name | 24 | ISSU | | Uber Taxi Service |
| No Patron Name | 25 | ISSU | | Uber Taxi Service |
| No Patron Name | 26 | ISSU | | Uber Taxi Service |
| No Patron Name | 27 | ISSU | | Uber Taxi Service |

Top Parking Counts by Day/Week/Month

This report shows the parking counts per day, week, and month for the specified group and date range.

| Top Parking Counts Per Day/Week/Month by Tenant | | | | | |
|---|------------|-------------------------------------|-------------------------|---------|-------|
| | | Beginning Date and Time: 01/01/2016 | | | |
| | | Ending Date and Time: 03/03/2016 | | | |
| Tenant | Date | Highest 1-Hour Usage | Max Value | Overage | Under |
| AirTran Airways | | | | | |
| | 01/13/2016 | 7 9:45:59AM | 1 | 6 | |
| Occupancy Avg. for Week: | | 7 | Total Values for Week: | 6 | |
| | 01/20/2016 | 7 12:00:41AM | 1 | 6 | |
| | 01/21/2016 | 7 12:45:00AM | 1 | 6 | |
| Occupancy Avg. for Week: | | 7 | Total Values for Week: | 12 | |
| Occupancy Avg. for Month: | | 7 | Total Values for Month: | 18 | |
| | 02/03/2016 | 7 12:00:06AM | 1 | 6 | |
| | 02/04/2016 | 7 12:45:17AM | 1 | 6 | |
| Occupancy Avg. for Week: | | 7 | Total Values for Week: | 12 | |
| | 02/24/2016 | 7 12:00:57AM | 1 | 6 | |
| | 02/25/2016 | 7 12:45:18PM | 1 | 6 | |
| | 02/26/2016 | 7 12:45:53PM | 1 | 6 | |
| Occupancy Avg. for Week: | | 7 | Total Values for Week: | 18 | |

Top Parking Counts By Period Summary

This report shows the parking counts, including the average count, number of parkers allowed, and the over/under of the group for the specified group and date range.

| Top Parking Counts By Period Summary | | | |
|--------------------------------------|----------------------|-------------------------------------|------------|
| | | Beginning Date and Time: 01/01/2016 | |
| | | Ending Date and Time: 03/03/2016 | |
| Tenant | Period Average Count | Allowed | Over/Under |
| AirTran Airways | 7 | 1 | 6 |
| American | 8 | 200 | (192) |
| Bernies Group PHX | 0 | 10,000 | (10,000) |
| charleys | 3 | 1 | 2 |
| Chautauqua | 73 | 300 | (227) |
| Chocolate Octopus | 1 | 200 | (199) |
| Continental | 11 | 200 | (189) |
| COTA | 8 | 1,000 | (992) |
| Curbside Valet | 36 | 100 | (64) |
| Daifuku | 3 | 1 | 2 |
| Delta | 34 | 500 | (466) |
| DGS | 3 | 200 | (197) |
| FAA | 0 | 100 | (100) |
| Frontier | 0 | 500 | (500) |
| Globe | 0 | 200 | (200) |
| GT Companies | 43 | 1 | 42 |
| Jet Blue OBE | 0 | 1 | (1) |
| JetStream | 12 | 1 | 11 |