

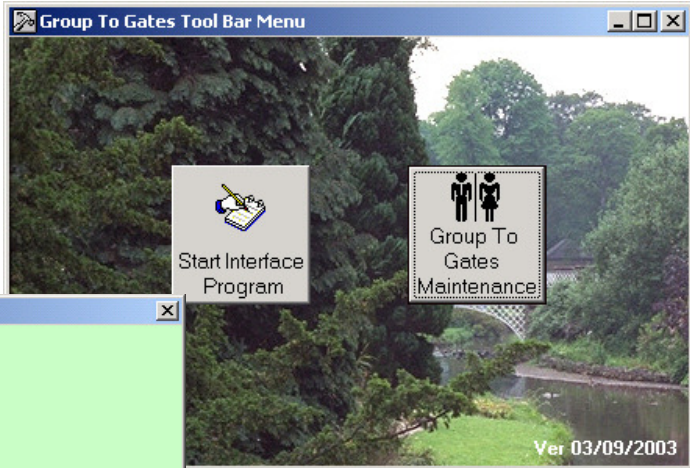
ScanNet Group to Gates Sign Control

Release December 7, 2006

Main Menu -

'Start Interface Program' - Monitor DBA/Group counts and turn on-off controls.

'Group to Gates Maintenance' - to define the DBA/Groups to monitor and associate the entry lanes with the full signs attached.



DBA or Group ID To Gates Setup Form

DBA or Group ID:

Ord Scan:

Lane ID:

Sign Control Number: Enter 1 or 2 for the Control to be Used for the Selected Gate

Current Full Sign Status: Enter '0' for 'Off', '1' for 'On' or '-1' for 'Unknown'

Group To Gates Currently Established

DBA or Group ID	Ord Scan	Lane ID	Sign Control Number	Full Sign Status
Dentistry	999	Fraser Entry1 LCD P05 D20	1	On
Dentistry	999	Fraser Entry2 LCD P05 D21	1	On
VGH	999	Health Entry2 LCD P03 D21	1	On

Buttons: Add, Update, Delete, Cancel/Refresh

Record: 1

DBA or Group ID to Gates Setup Form -

'Add' to add a new DBA and lanes relationships.

Click an item in the grid to edit.

'Update' button to save a new record or updates made.

'Delete' to delete selected entry in the grid.

'Cancel/Refresh' to cancel and edit/refresh the grid.

Group to Gates Interface Form -

Monitors the current status of the selected DBA/Groups and the associated sign status.

Use the spinner control (up/down arrows) by the Timer Interval to increase or decrease the wait time between checks. 1000 units equal 1 second. Timer default is to check every 10 seconds (10,000 units).

Status box at bottom denotes last action taken.

Group To Gates Interface Program

This Form is Active To Check For Group Counts That Exceed Group Limits

When The Red Light Is Visible The Process is Waiting. The Green Light Indicates that it is processing the data.

Waiting

Timer Interval:

Gate Control Status				
Sign Status	Group Name	Group Cnt	Group Limit	Lane Desc
On	Dentistry	12	12	Fraser Entry1 LCD P05 D20
On	Dentistry	12	12	Fraser Entry2 LCD P05 D21
On	VGH	15	12	Health Entry2 LCD P03 D21

Turn on sign for Health Entry2 LCD P03 D21 for Control 1

Rel 1.2- 03/08/2003

